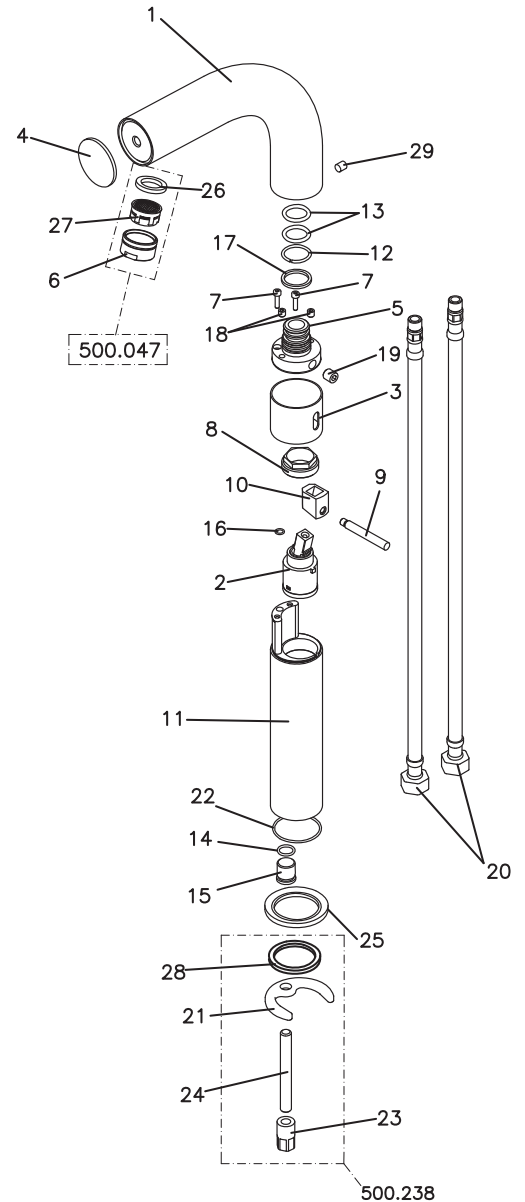
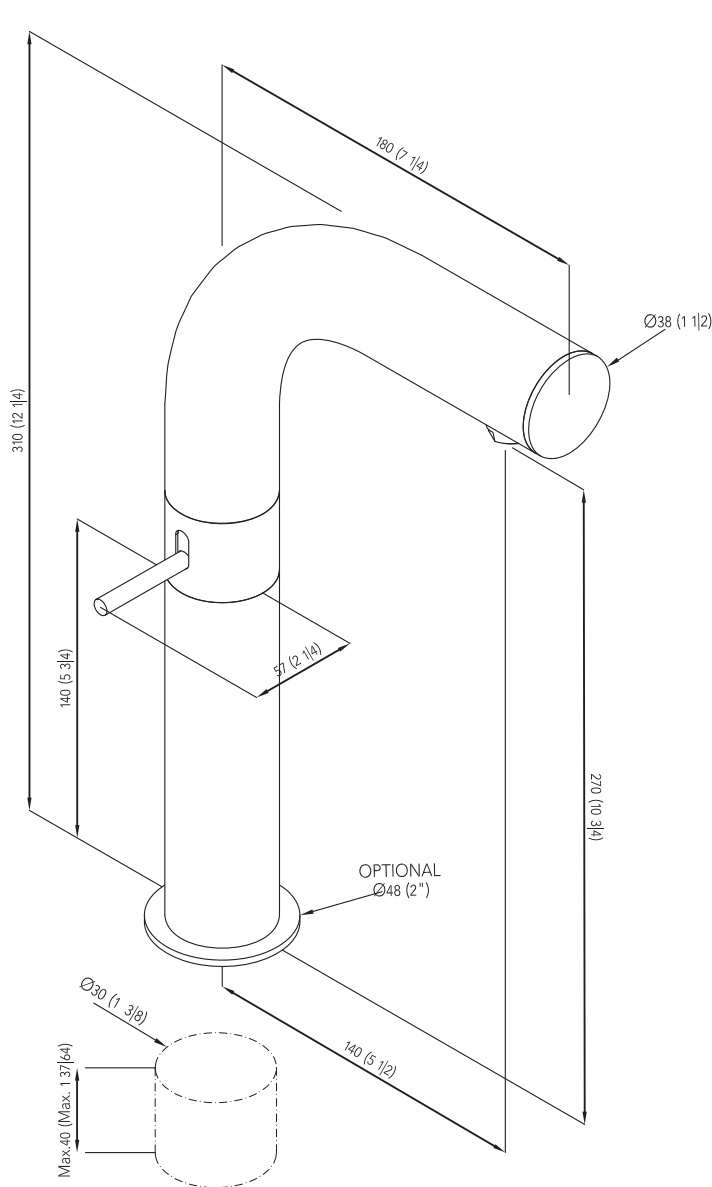


Tabo T12: Installation



| Item | Cant. | Pcs | Codigo Code | Observ. |
|------|-------|-----|-------------|---------|
| 1 | 1 | | 825.653 | |
| 2 | 1 | | 600.015 | |
| 3 | 1 | | 825.667 | |
| 4 | 1 | | 825.654 | |
| 5 | 1 | | 825.655 | |
| 6 | 1 | | 100.047 | |
| 7 | 2 | | 870.114 | |
| 8 | 1 | | 825.664 | |

| Item | Cant. | Pcs | Codigo Code | Observ. |
|------|-------|-----|-------------|---------|
| 9 | 1 | | 825.666 | |
| 10 | 1 | | 825.669 | |
| 11 | 1 | | 825.671 | |
| 12 | 1 | | 880.011 | |
| 14 | 1 | | 885.048 | |
| 15 | 1 | | 825.420 | |
| 16 | 1 | | 885.123 | |

| Item | Cant. | Pcs | Codigo Code | Observ. |
|------|-------|-----|-------------|---------|
| 17 | 1 | | 810.174 | |
| 18 | 2 | | 870.058 | |
| 19 | 1 | | 870.119 | |
| 20 | 1 | | 600.521 | UK/EU |
| 20 | 1 | | 600.501X | USA |
| 21 | 1 | | 875.023 | |
| 22 | 1 | | 885.128 | |
| 23 | 1 | | 870.043 | |

| Item | Cant. | Pcs | Codigo Code | Observ. |
|------|-------|-----|-------------|--------------|
| 24 | 1 | | 870.059 | |
| 25 | 1 | | 825.736 | optional |
| 26 | 1 | | 885.074 | |
| 27 | 1 | | 500.047 | |
| 28 | 1 | | 885.039 | optional |
| 29 | 1 | | 870.139 | optional USA |

Victoria & Albert pursues a policy of continual development and improvement. As such, product specifications may be changed without prior notice.
 Victoria & Albert lleva a cabo una política de continuo desarrollo y mejora y, como tal, las especificaciones del producto pueden ser cambiadas sin previo aviso.
 Victoria & Albert poursuit une politique de développement continuel. Pour cette raison, les données techniques peuvent être amenées à changer sans avis préalable.
 Victoria & Albert betreibt eine kontinuierliche Weiterentwicklung und Verbesserung Ihrer Produkten, wobei also Produktspezifikationen ohne vorherige Ankündigung geändert werden können.

