

Napoli: Installation

Recommended installation using Special Drain: VA code SPE-CAP-PC, BN, PN, PB, ORB

The Napoli is supplied in two versions, left hand overflow (NAP-N-LH) and right hand overflow (NAP-N-RH)

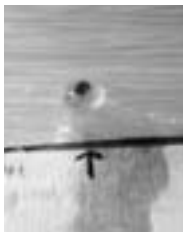
The fitting of the base and installation of the tub will be seen as acceptance of quality.

We strongly recommend that you use a suitably qualified installer. Instructions must be adhered to. We cannot accept responsibility of incorrect installation. Victoria & Albert customer service representatives are not qualified to give advice on DIY installations.

Note We recommend the plastic and foam packaging remains on the tub until all the construction and decoration is completed. ABS pipe should always be used below floor level.

- a. Position the bathtub on the floor in the desired location and mark the center of the drain outlet directly onto the floor. Also mark the position of the fixing holes (fig. A.1) in the base and the outside line of the base on the floor and the position of the overflow tube through the floor (fig. A.2)

The bathtub cannot be repositioned once installed therefore initial positioning and markings are critical.



(A.1)



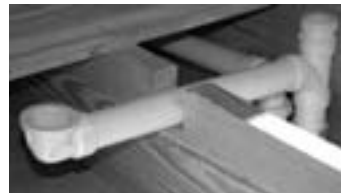
(A.2)

- b. Turn the tub upside down (be careful not to damage the edge). Measure the thickness of the base at the fixing holes. Add 1/8" to the measurement and mark on the floor directly behind the position of the fixing holes you marked on the floor previously (fig B)



(B)

- c. Now line the wooden face of the fixing block with the position you marked on the floor in point B and secure the blocks using an appropriate fixing method for your floor type.
- d. Check that the bathtub fits over the fixing blocks you attached to the floor and that the wooden blocks line up with the fixing holes in the base.
- e. Remove bathtub to a clean and safe location. Rough in the drain (fig. E.1) and install overflow tube (fig. E. 2-5) The overflow tube connects into a 1-1/2" plastic trap adaptor at floor level.



(E.1)



(E.2)



(E.3)



(E.4)



(E.5)

- f. When all construction has been completed carefully lower the tub onto the fixing blocks and connect to the drain and overflow assembly.
- g. Check all pipe work and fittings for possible leaks before fixing the tub to the floor fixing brackets using the self tapping screws supplied.
- h. Re-check for leaks and when completely satisfied attach covers to hide the floor fixing points in the base. For the ultimate finish, we recommend applying a white silicone bead around the base of the tub.

Note This tub requires an underfloor connection of the overflow and shoe tube (not supplied). We have purposely omitted these parts from the Special Drain as compression fittings should not be used below floor level.

Questions?

1.800.421.7189