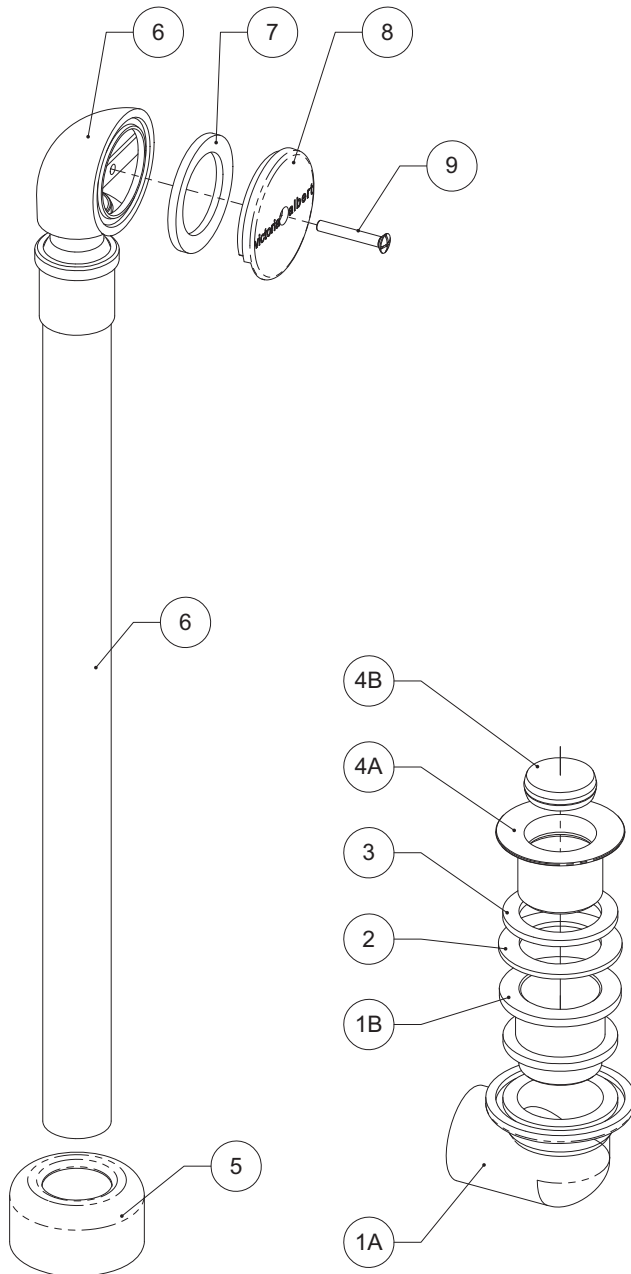


# Special Drain: Installation

Recommended for ios, Napoli and Ravello bathtubs



## Fitting instructions

If you are planning to install close to walls, prior to roughing in check the location for adequate space for the overflow fitting.

Rough-in the drain and shoe tube in accordance with the specific tub fitting instructions.

1. Attach drain body (1B) to the roughed-in shoe tube using plastic elbow (1A).
2. Fit the drain body (1B) with the rubber washer (2).
3. Thread foam washer (3) onto strainer (4A) and screw through drain hole into drain body (1B).
4. Run water and check for any leaks.
5. Thread flange (5) onto overflow tube (6) and insert into roughed-in compression fitting (see below + over page).
6. Fit the overflow tube (6) with shaped washer (7) and fix to tub overflow hole using overflow face plate (8) and screw (9).

**Questions?**  
1.800.421.7189

## Additional information

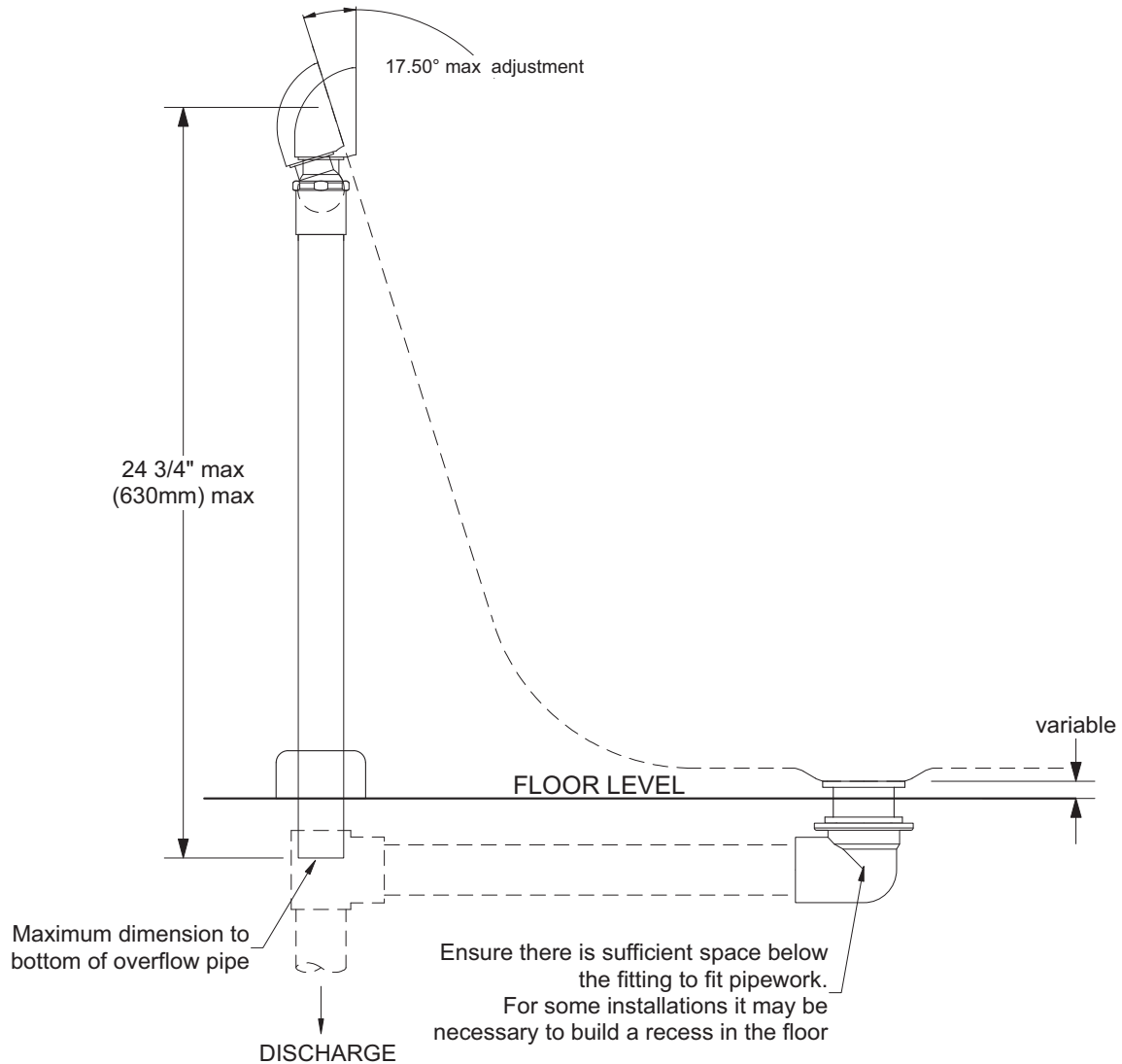
Due to differences in plumbing regulations the shoe tube and sub-floor pipe work is not supplied.

It may be necessary to shorten the overflow tube to fit your bathtub. We strongly recommend the use of a suitable qualified plumber to install your bathtub.

Victoria & Albert customer service representatives are not qualified to give advice on DIY installations.

# Special Drain: Installation

Recommended for ios, Napoli and Ravello bathtubs



## Additional information

Due to differences in plumbing regulations the shoe tube and sub-floor pipe work is not supplied.

It may be necessary to shorten the overflow tube to fit your bathtub.

We strongly recommend the use of a suitable qualified plumber to install your bathtub.

Victoria & Albert customer service representatives are not qualified to give advice on DIY installations.